

International Samuel Exploration Corp. is a Canadian exploration company involved in the exploration for base and precious metals in the Reed Lake area of Manitoba and is diamond hunting with joint-venture partner Diamonds North in the Canadian Arctic.

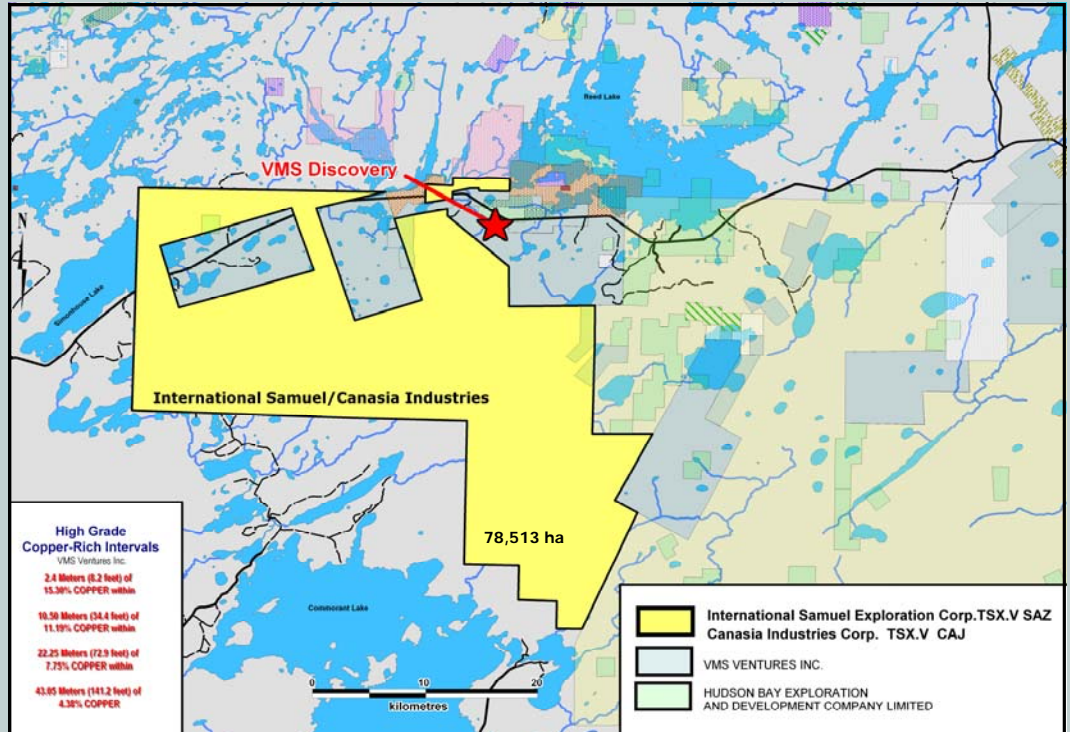
The company has two key projects it is currently focusing on. The Company's mission is to fund the exploration and development of these projects to enhance shareholder value.

- **Reed Lake Project**
- **Ualliq Project**
- **Share Structure**

Issued: 5.1 million



Manitoba Property



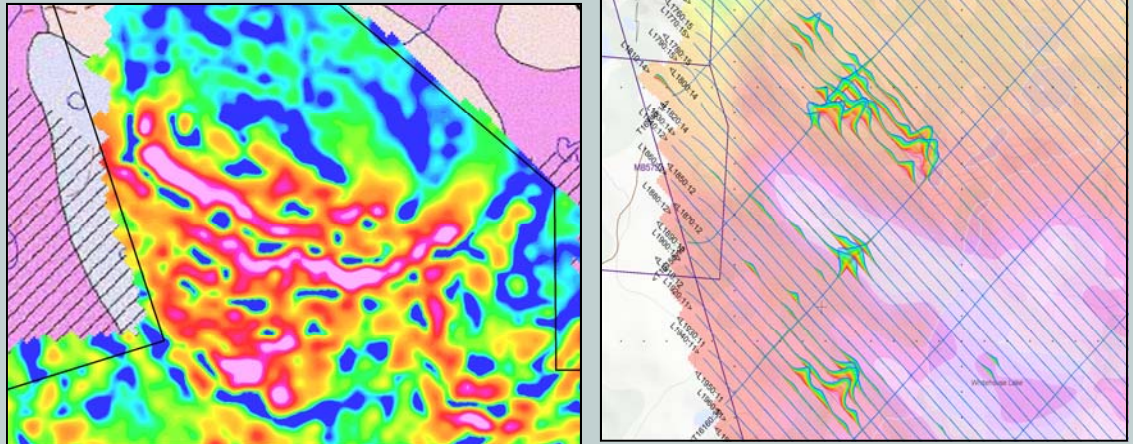
Reed Lake Project

International Samuel holds a 50% interest in 78,513 hectares in the Reed Lake area of Manitoba. The property is strategically located around the VMS Ventures Inc. base metal discovery in the historic and very prolific Flin Flon mining camp. To date, 27 deposits have been mined in the Flin Flon Belt. Many of these deposits are polymetallic and contain significant contents of precious metals. The Flin Flon VMS deposit alone produced over 120 tonnes Au.

International Samuel undertook a 3,300 line kilometre VTEM airborne electromagnetic survey. Geotech's VTEM survey is considered one of the airborne survey industry's best deep-penetrating electromagnetic and magnetic systems. The VTEM airborne magnetic and electromagnetic components are successful in outlining structures, favourable geology, zones of conductivity, magnetic zones and zones of alteration, some of which are coincident with areas of known mineralization.

2009 Exploration Update

The entire survey area underwent a detailed geophysical interpretation by Condor Consulting of Colorado, an industry specialist in interpreting VTEM surveys. Condor identified eight separate areas of potential base metal conductors. As a result of the interpretation the company completed a 31.2 line kilometres ground geophysics on two grids. The Company is currently in the process of assembling a drill program.

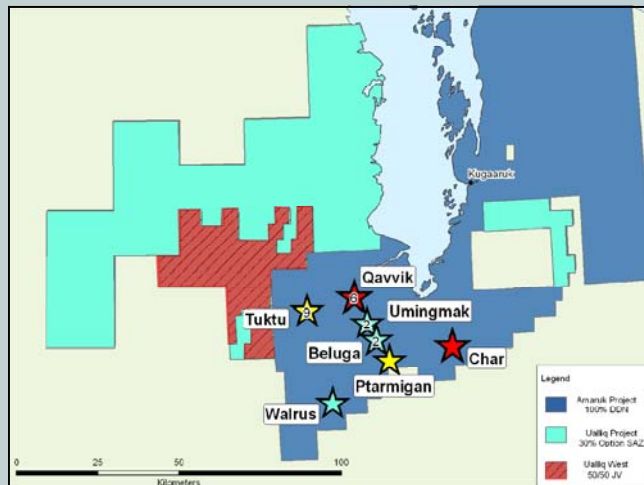


Reed Lake targets area

Nunavut Property Ualliq Project

Over 326 geophysical targets were identified on the Ualliq property in Nunavut and in excess of 20,000 line kilometres of airborne geophysics were completed over the property. The airborne survey targeted areas of well defined kimberlite indicator mineral trains. Ualliq is less than 20 kilometres from several recently discovered diamondiferous kimberlites on the Amaruk property where the Tutku kimberlite yielded 550 diamonds from 80 kg of kimberlite. International Samuel Exploration Corp. is earning a 30% interest in the property.

In addition the company has 50:50 ownership (Ualliq West) with Diamonds North. Ualliq West is located less than 15 kilometres from the Tutku kimberlite.



ISS: TSX.V
FACT SHEET
Spring 2009

888-700 West Georgia Street
Vancouver, B.C.
V7Y 1G5

Tel: 604.718.5454
E-mail: info@internationalSamuel.com